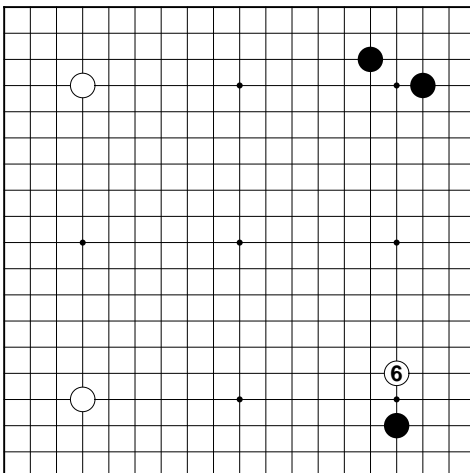
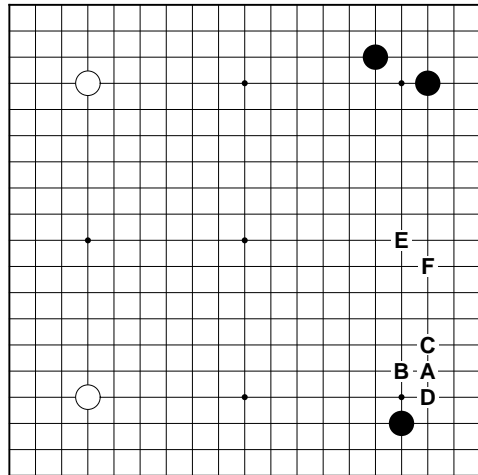


Let's discuss another classic opening style. This is a common pattern. Black makes territorial plays and White plays fast and flexible with two star points.

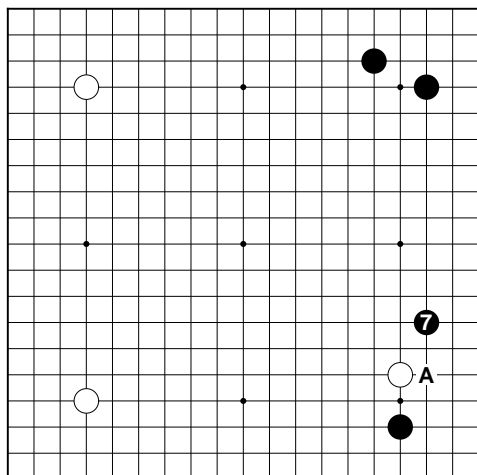
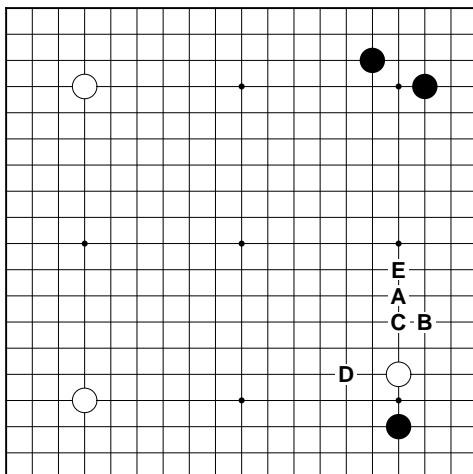
Should White now develop a moyo or reduce Black? White has high stones with moyo potential, but Black's stones work together in a way that could also make a moyo. So which side is biggest, the most valuable?

The right side is biggest so White should play there. At A is okay, but it aims at territory. At B is aiming at center influence and moyo development. At C is possible for reduction. After C, Black would play at D and White can jump to E, separating the black groups on right side. Playing at F is passive in this situation, just trying to avoid complicated joseki; it would lead to a boring game. If White's corner stones were on the 3-3 points, F would be okay. B is best in this case.



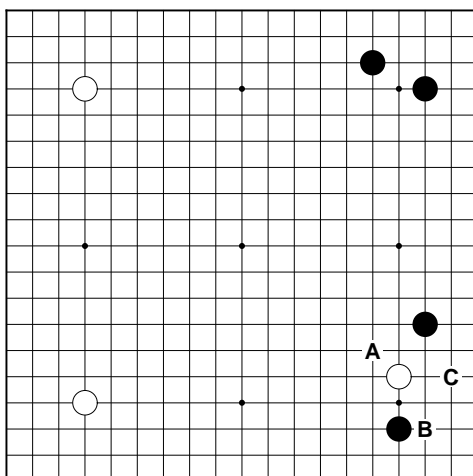
Now Black must choose an area. Should Black reduce on the left side, develop the bottom or the top, or play the right side? Neither the top nor the bottom are good for Black development because his stones are low. These are also not developable for White because of Black's low stones. Playing on the left side is okay, but nothing special. The right side is the place to play. It is developable for Black and any play there will put pressure on White.

Black must choose between an ideal five space extension from his corner enclosure (E) and a proper pincer against ⑥. An extension would not put any pressure at all on White. The proper pincer is at A or B. At C is too aggressive; White will jump to D and expect to attack Black C from the direction of his corner enclosure. A aims at center influence and B aims at territory, so B is best in this case.



How should White respond? This is a case in which Black has an ideal follow-up move, namely, at A. In such cases you must prevent your opponent from getting the ideal follow-up move.

White has three choices: A prevents Black from connecting his two stones. B separates Black and is good for reducing the corner, but may also result in White's getting separated. C separates the two black stones and prepares to attack, but this is not an easy area for White to attack Black so this would be slow. In this case B is doable, but White may end up with a heavy group. A is best here because it works well with White's high stones on the left side.

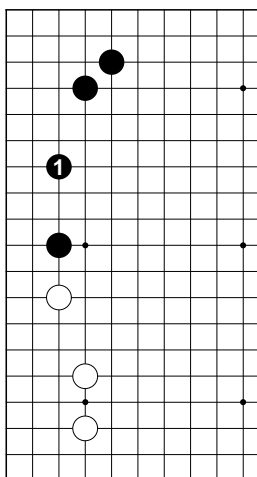
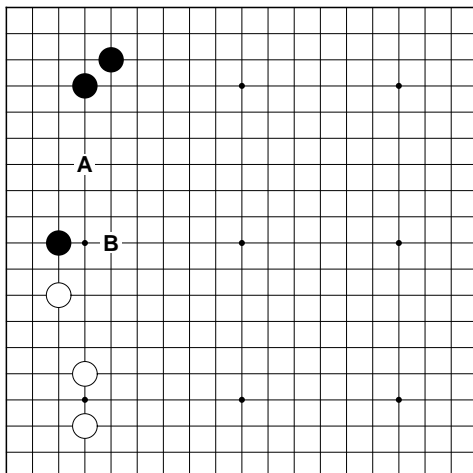




Where is the best move for Black to protect this position?

Black has three problems, the weak single stone and a very open side, plus a corner that is reducible.

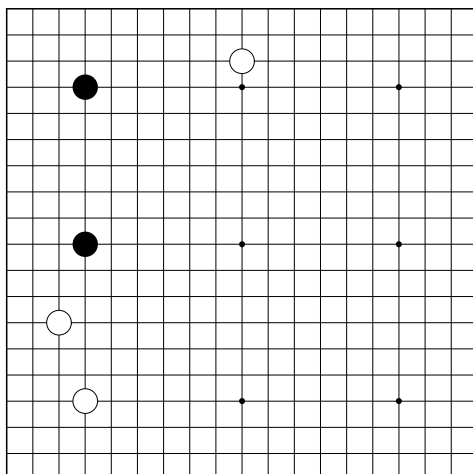
Black A helps the connection to the single stone, but this area can obviously be invaded by White. [See “How to Invade” in volume 2 of *The Workshop Lectures*.] There is more than enough open space for a successful invasion. The same goes for Black B.



In this case the corner is already fairly solid so this ① is best, since it helps the single stone more and provides better protection against an invasion.

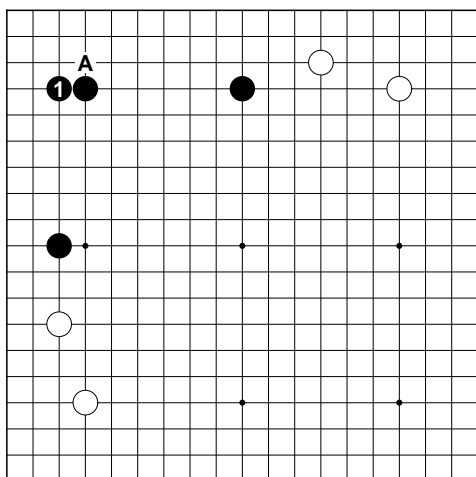
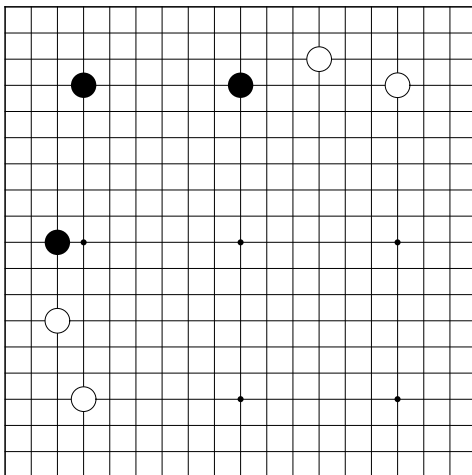
What about this case? Black’s two fourth line stones are weak and the entire area is very open. What should Black do?

Notice that the side is more open in this case because Black’s lower stone is not on the third line. So Black should aim more at protecting the corner.



In this situation how should Black play?

Note that the left side is more valuable because of Black's third line stone. If he is to protect this side or the top side, he should choose the left side. Also, a third line stone is generally weaker than a fourth line stone because it may not be able to escape as easily.



This is the best. It protects the corner and the left side. If ① is at A, the top side is still open and the left side is more vulnerable. Helping the middle stone is the best way to support two side stones like this.

If Black plays this ①, White can come in at ②. Now the corner is open and the top area is lost.

If ① is at A and White plays ②, Black can respond at B and fight.

