

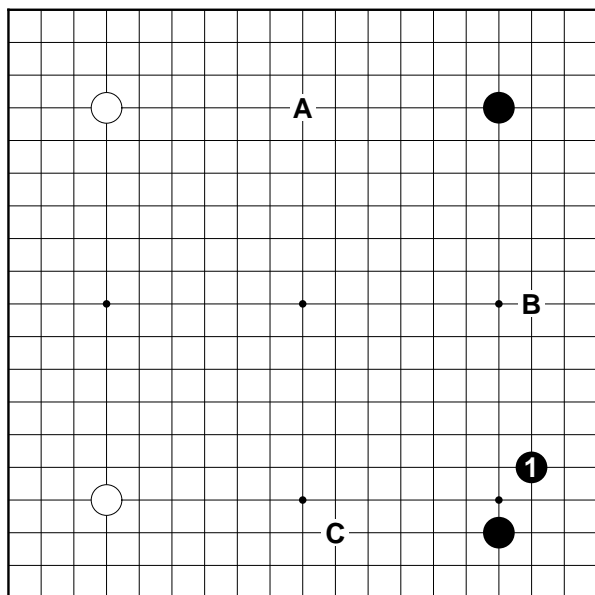


# 2. Opening

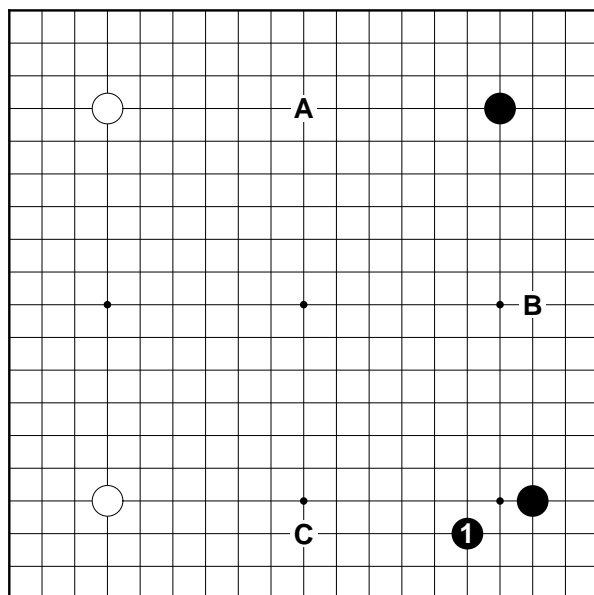
# Day 1

Find the correct moves and circle them.

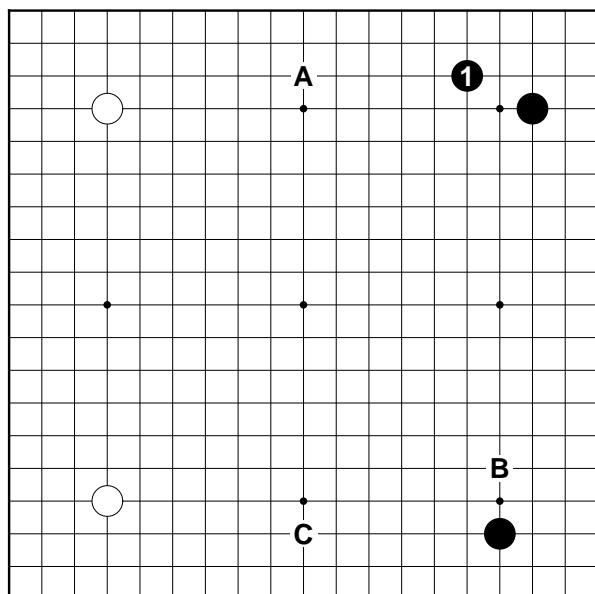
1



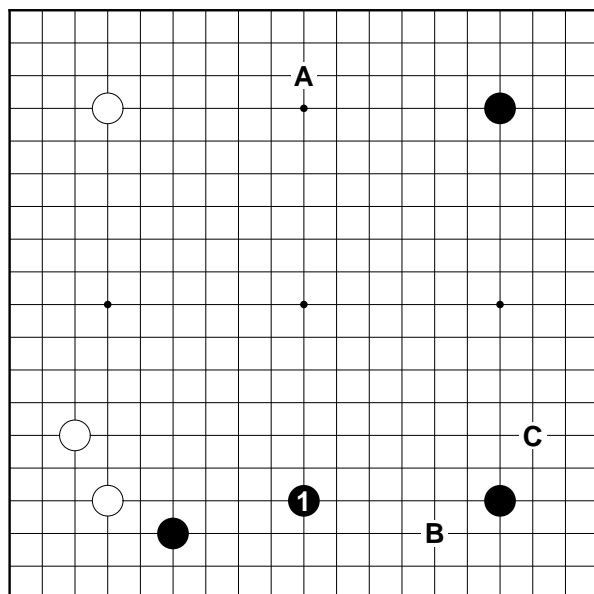
2



3



4

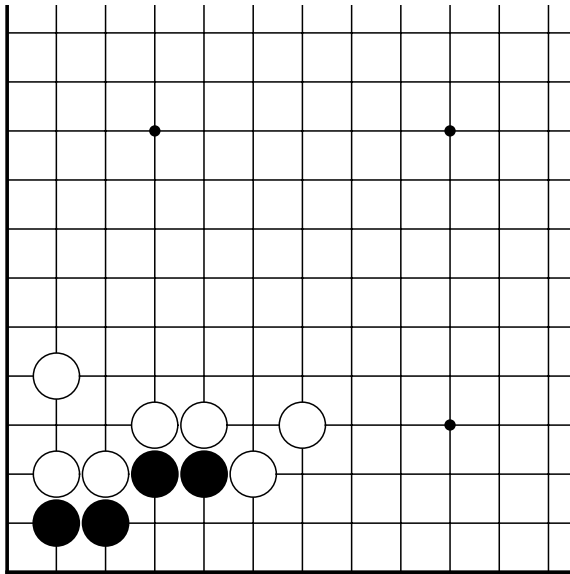


# 3. Life & Death

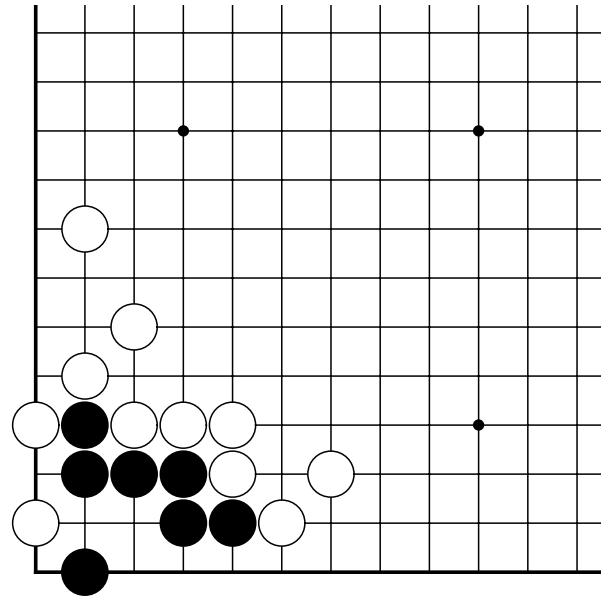
# Day 1

Find the best answer. Black to play.

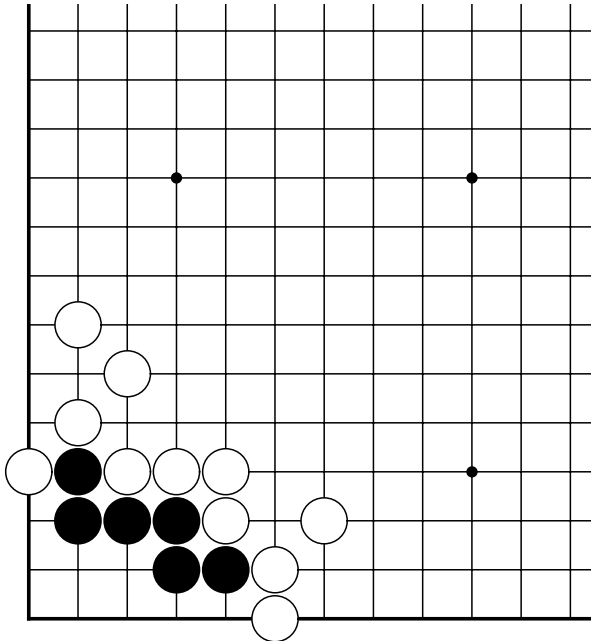
1



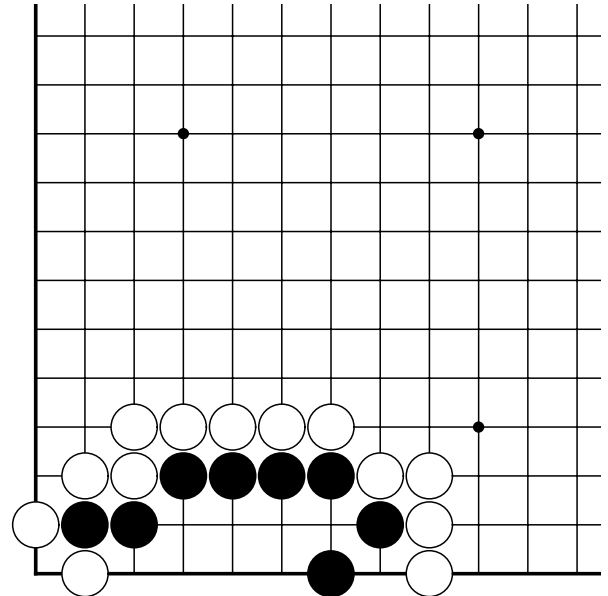
2



3



4



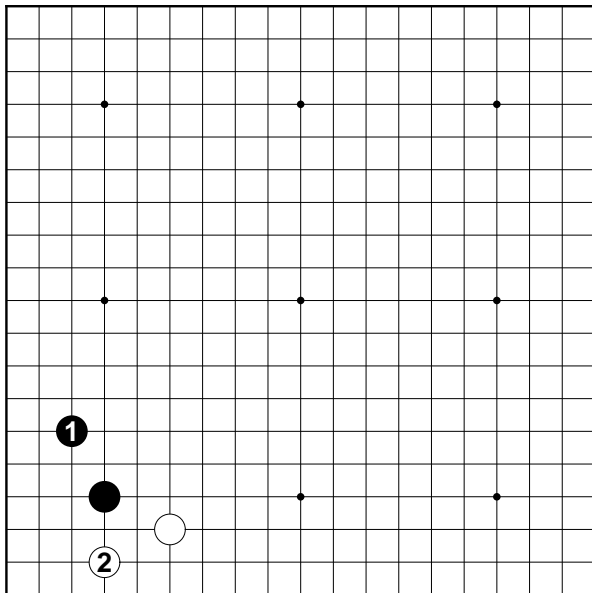
3

# 4. Jeongseok, Joseki

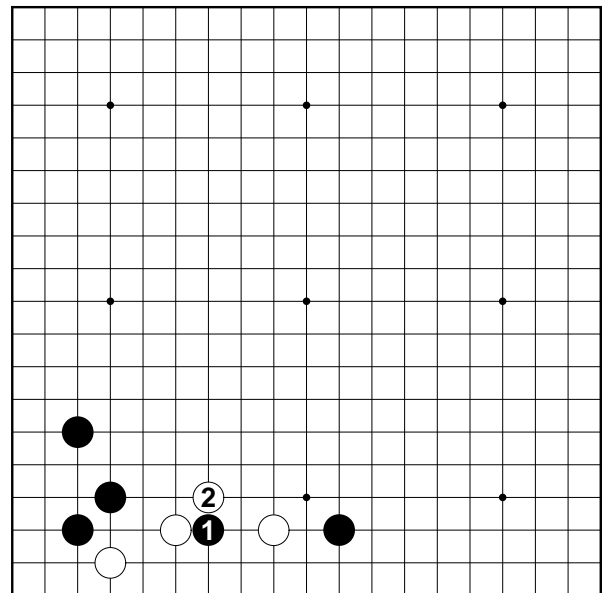
# Day 1

Find the best answer.

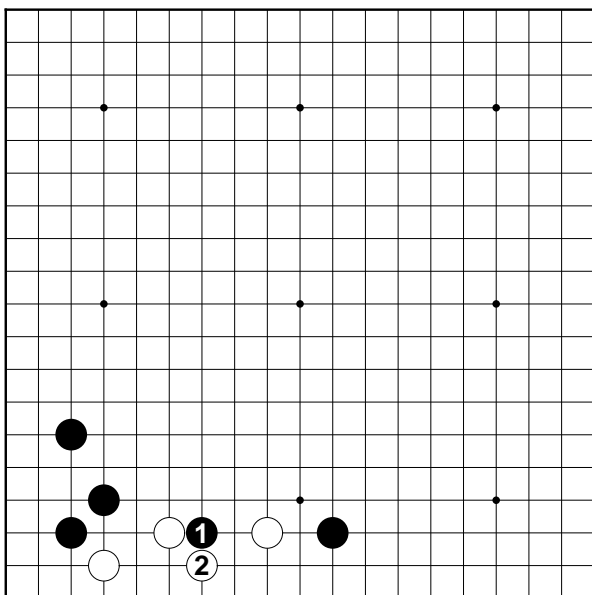
1



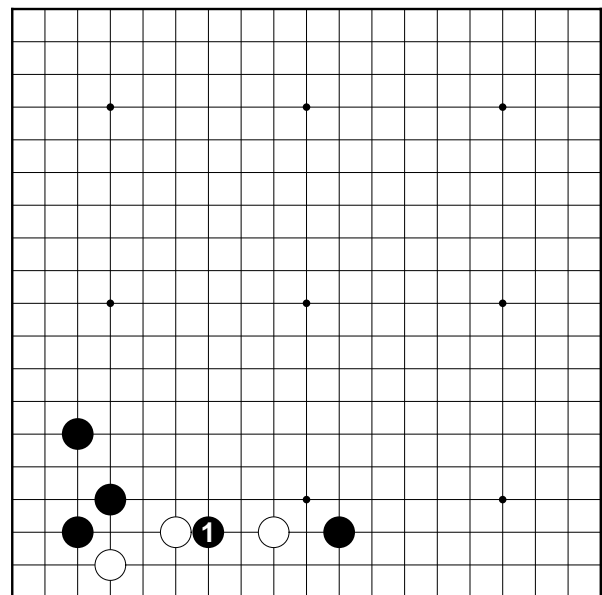
2



3



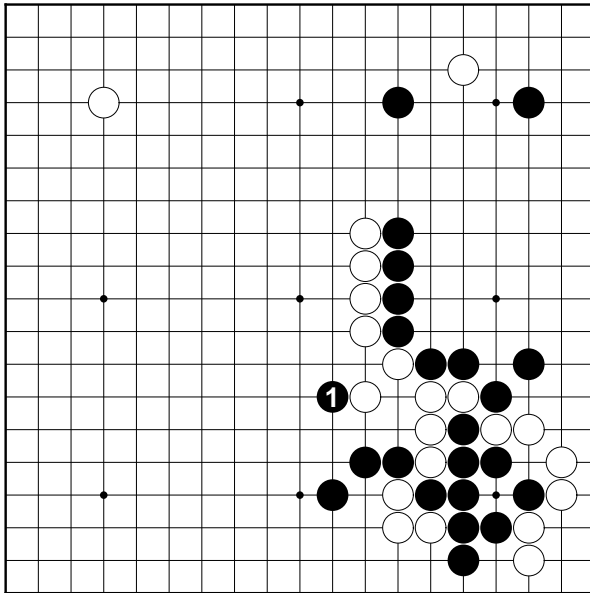
4



# 5. Pro's Actual Game Practice

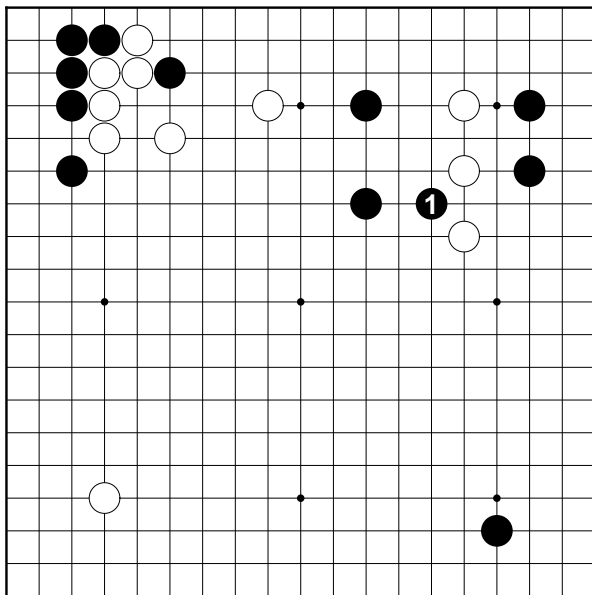
## Day 1

1



[1 move, W: Lee Chang-Ho]

2

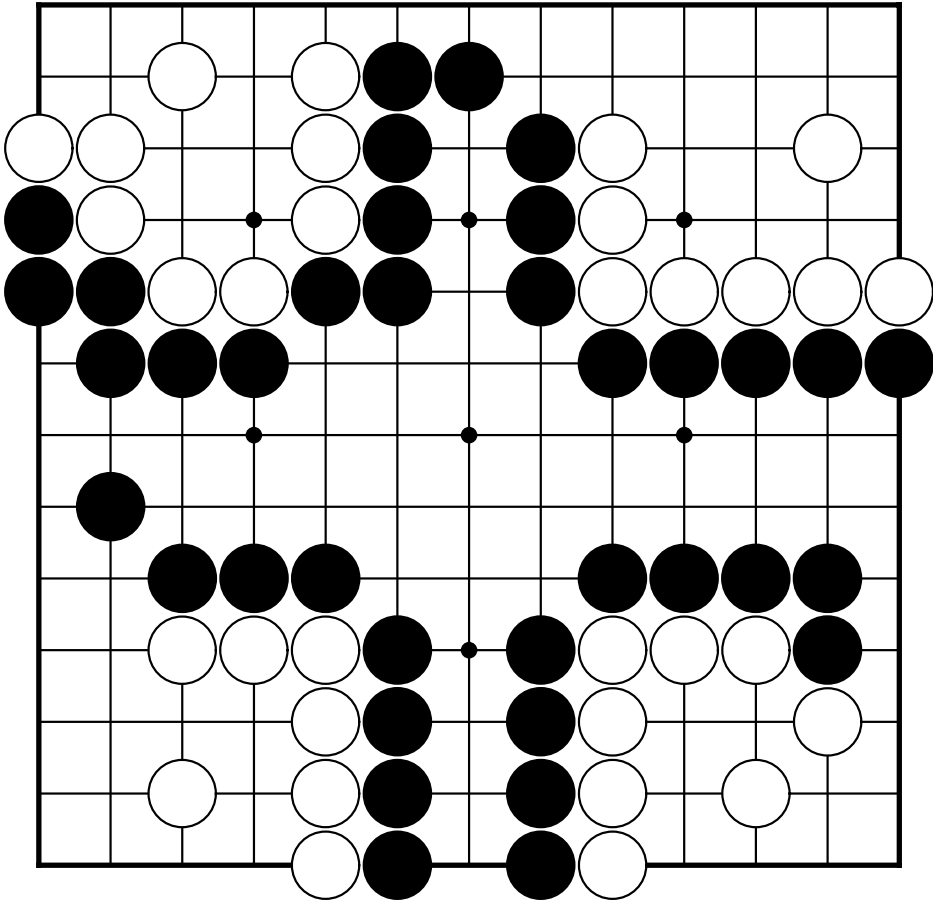


[3 moves, W: Yamada Kimio]

# 6. End Game

# Day 1

Write down the best end game moves and the total points of territory for both sides, and find the winner. (komi 6.5 points, Black to move)



Black  points

White  points

B, W  points wins