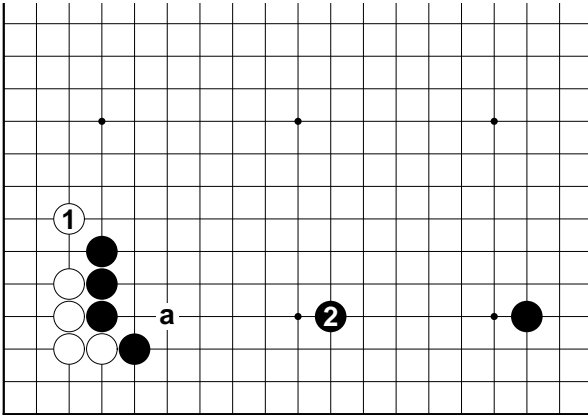


Dia. 1

Dia. 1 (Jung-seok)

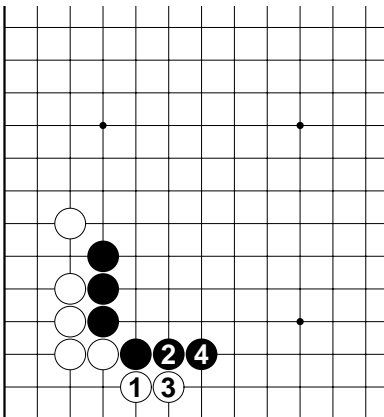
White's connection at 1 aims to simplify the situation. Then, the sequence up to 4 is a common jung-seok.



Dia. 2

Dia. 2 (Speedy development)

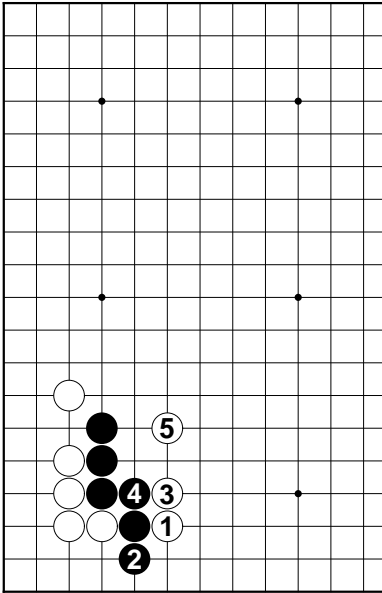
Against White 1, Black can extend to 2 instead of Black 'a'.



Dia. 3

Dia. 3 (White's response 1)

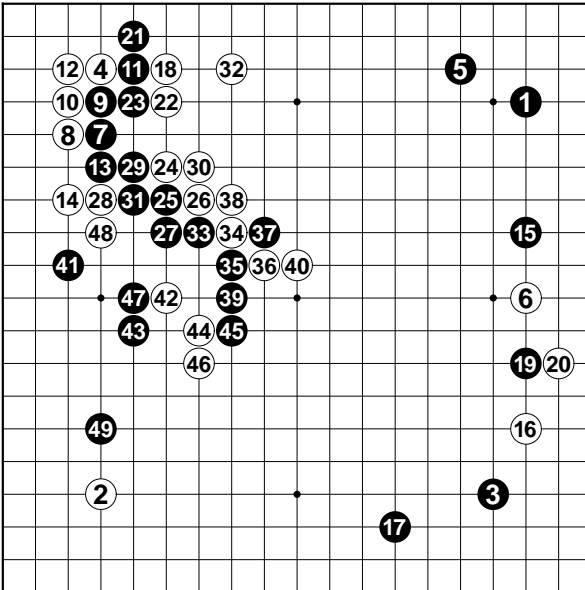
If Black omits the diagonal play at 'a', White 1 and 3 are big endgame plays.



Dia 4

Dia. 4 (White's response 2)

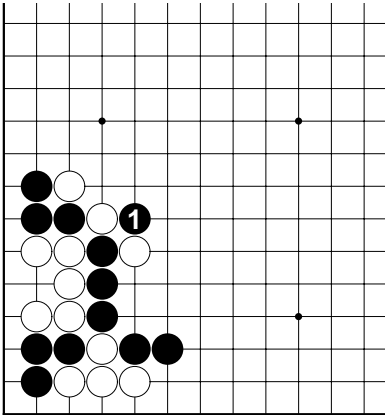
White's clamp at 1 is also possible. Then, the sequence up to White 5 is expected.



[Real Game 1]

● Lee Chang Ho 9 dan
 ○ Mok Jin Suk 4 dan
 7-1-99,
 Black won by resignation

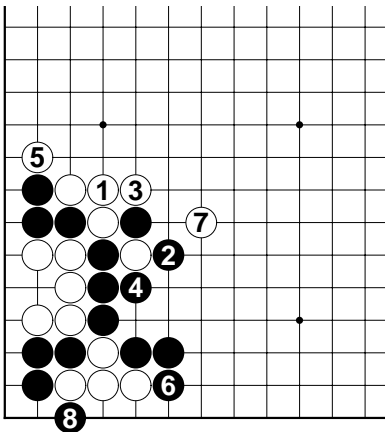
(1 ~ 49)



Dia. 1

Dia. 1 ('a' type)

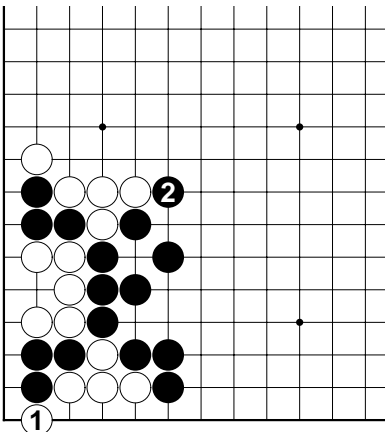
Black's cut at 1 is normal in this situation. Then,



Dia. 2

Dia. 2 (New style jung-seok)

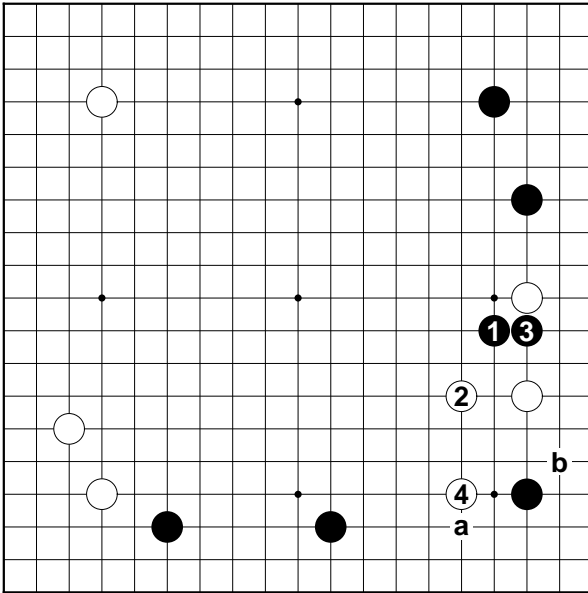
The sequence up to White 8 is an up-to-date jung-seok.



Dia. 3

Dia. 3 (Black's influence)

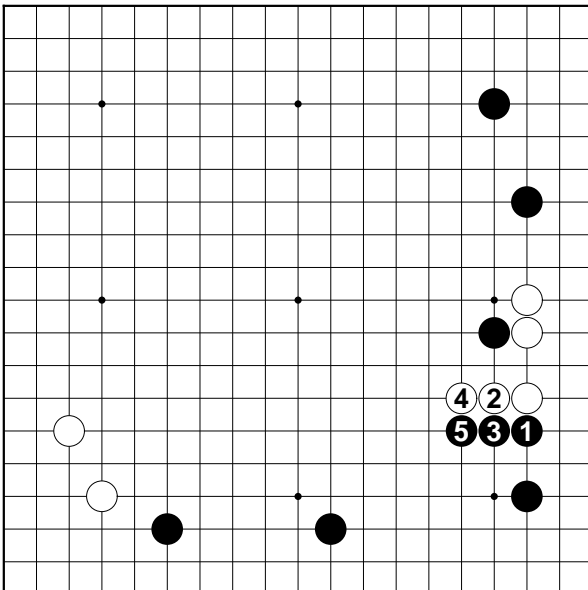
If White plays at 1 instead of White 7 in the previous diagram, Black 2 is the key point for influence. This result is good for Black.



Dia. 1 (White's resistance)

White 2 and 4 in this situation are expected. Then, Black 'a' or 'b' is normally played.

Dia. 1



Dia. 2 (A Type)

Black 1 is a new move. If White answers at 2, Black 3 and 5 are good.

Dia. 2

